



US Army Corps  
of Engineers®  
Honolulu District



# KAUNAKAKAI HARBOR

## MAINTENANCE DREDGING PROJECT

**PROJECT DESCRIPTION:** The Honolulu District, U.S. Army Corps of Engineers is responsible for maintaining safe navigation in federal harbors in the State of Hawai'i. The Honolulu District constructed Kaunakakai Harbor in 1934 to an authorized depth of -23 feet. In 1973, the Honolulu District maintenance dredged the harbor to restore the depth to -23 feet. Since then, sand and mud have built up in the harbor, resulting in high spots as shallow as -12 feet. Shallow areas are a safety concern for vessels. The increased build-of sand and mud is easily kicked up and carried to the surrounding marine ecosystems, such as coral reef.

The Honolulu District will be maintenance dredging Kaunakakai Harbor again to remove approximately 30,000 cubic yards of sand and mud from shallow areas and restore to depth of -23 feet (Figure 1). The material removed from the harbor will be transported to the U.S. Environmental Protection Agency's designated disposal site, located approximately 38 miles from Kaunakakai Harbor (Figure 2). Removing the built up sand and mud will allow for safe vessel passage and reduce the suspended sand and mud.

The local sponsor is the State of Hawai'i Department of Transportation Harbors Division. The maintenance dredging contract was awarded in August 2022 to Carmenzind Dutra JV LLC.

**ADDITIONAL INFORMATION:** Scan the QR code or go to the link below for



additional information.

[www.poh.usace.army.mil/Missions/Civil-Works/Civil-Works-Projects/Kaunakakai-Harbor/](http://www.poh.usace.army.mil/Missions/Civil-Works/Civil-Works-Projects/Kaunakakai-Harbor/)

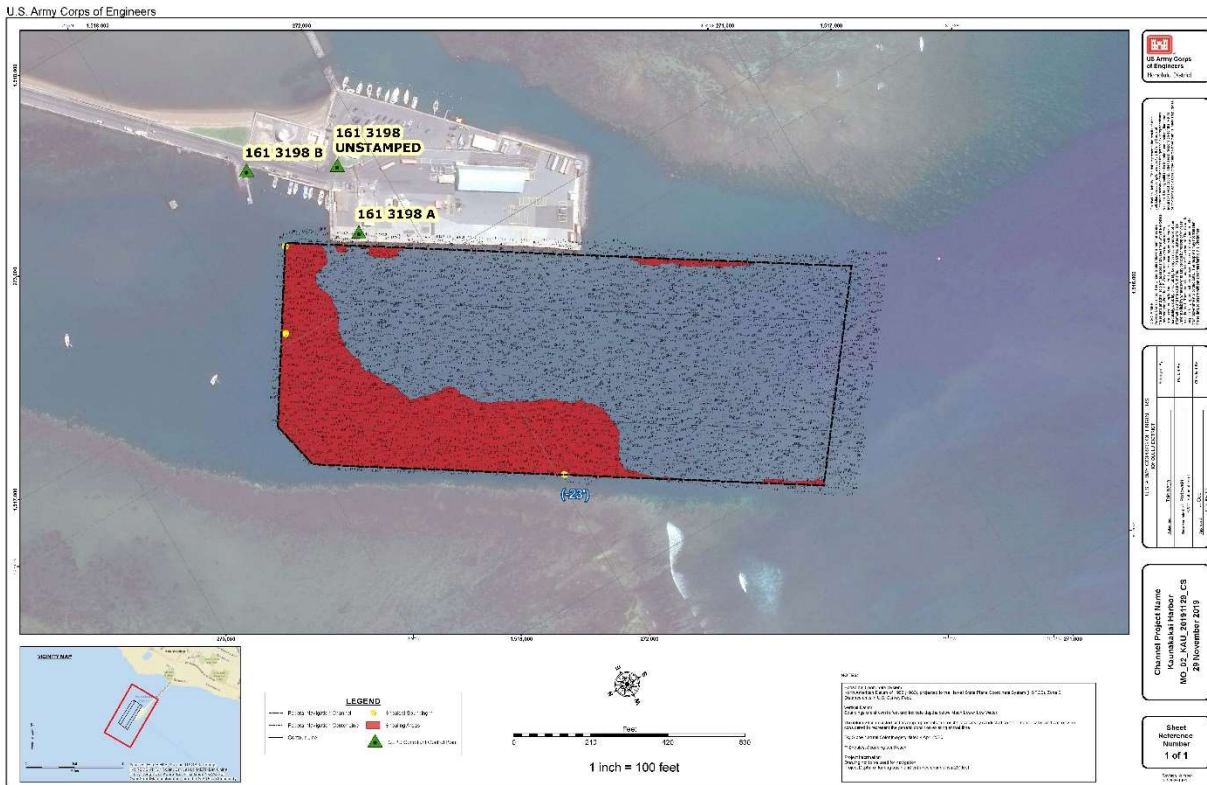


Figure 1: Limits of Maintenance Dredging in Kaunakakai Harbor. Maintenance dredging work will be done only within the boundaries of the federal harbor basin shown with the black line. Areas in red are shallower than the authorized depth of -23 feet. The sand and mud in these shallow areas will be removed by maintenance dredging and depths will be restored to -23 feet.

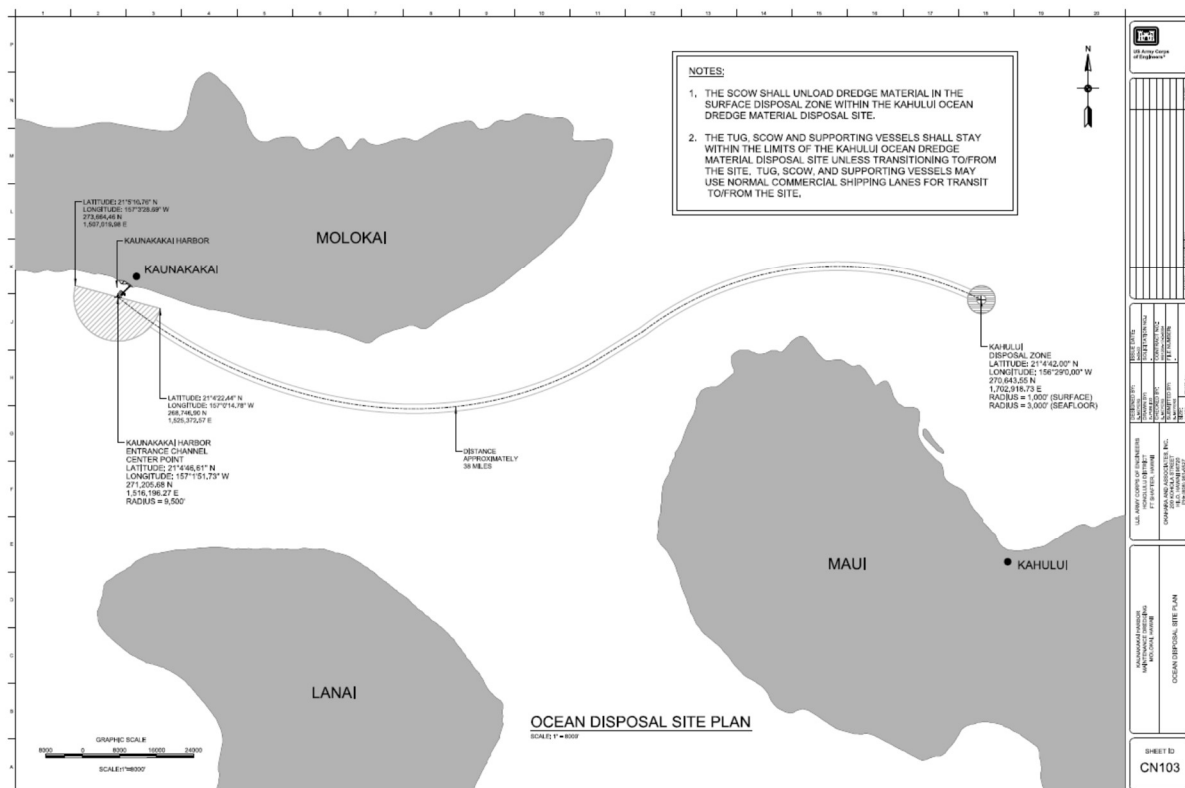


Figure 2: Ocean Disposal Site Plan. Sand and mud removed from Kaunakakai Harbor will be disposed of at the U.S. EPA's designated disposal site, located approximately 38 miles from Kaunakakai Harbor.